



# Cross-section Plus Plug-In Build 1331 Release Notes

August 7, 2009

## Description

The Cross Section Plus plug-in allows users to calculate the surface area and length of the perimeter for a collection of cross sections. The plug-in works in conjunction with the cross section plane.

## Requirements

- SpinFire Professional 8.3 or above
- Reader Build 1247
- .Net 2.0

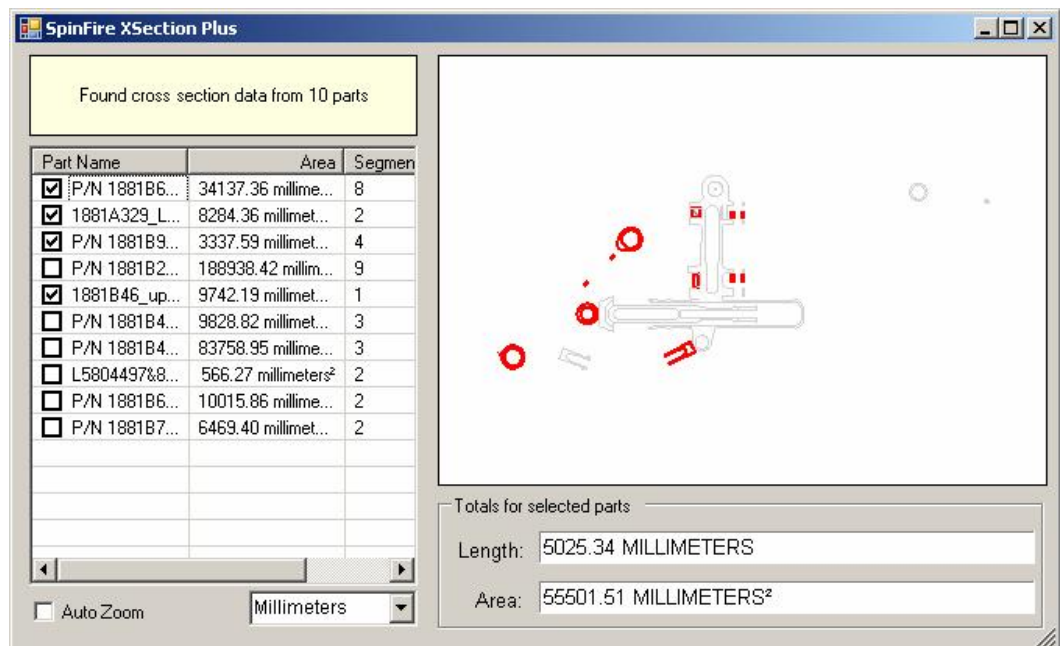
## Known Issues

The cross section analysis is very sensitive to good tessellations. If there are gaps, then the algorithm cannot determine a closed path and the component is excluded from the analysis.

## Procedures

### To Analyze Cross Sections

1. Invoke the **XPlus!** from the **Applications** toolbar.  
Note: The cross section must be on to enable the plug-in.
2. The Automatic Part ID Markup dialog gives the user options to select the parts/assemblies and create the markup



3. Select which components to include in the analysis.