



# DesignShare™ Foundation

*DesignShare Foundation  
Innovation Through Collaboration*

## *Benefits Overview*

- Provides a platform for implementing innovation and lean initiatives
- Allows access to any piece of product information by *anyone, anywhere* regardless of role
- Eliminates collaboration cycles
- Reduces collaboration expenses & rework expense caused by out-of-date informations

*Find, Use, Share, and Manage all product information with ease by leveraging the Microsoft SharePoint® platform*

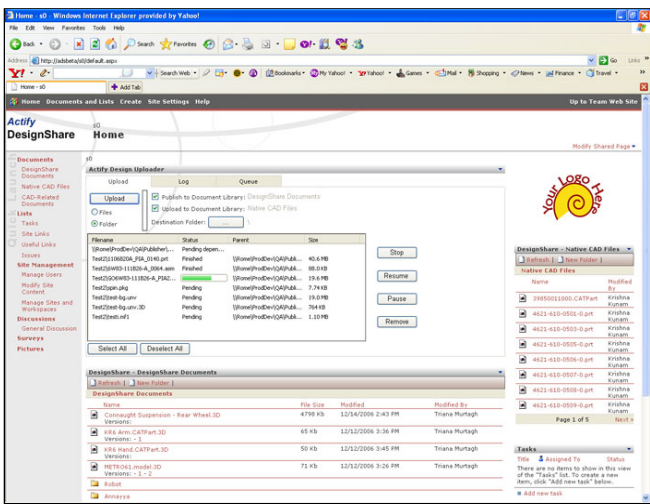
Actify DesignShare™ Foundation enables workgroups to quickly and securely track, collaborate on, and manage CAD data, plus all related documents, enterprise-wide. Easily deployed, it unites the Actify SpinFire technology with the document management, sharing, and collaboration capabilities built into every Microsoft® SharePoint™ managed environment.

The DesignShare Foundation solution performs a range of sophisticated digital design communications tasks such as creating team worksites that can be further customized to meet job- or department-specific needs. Intuitive dashboards enable you to view, annotate, and upload project information, as well as automatically convert-on demand or in batch mode-all major 2D and 3D native CAD data formats to Actify's system-neutral .3D format.

By leveraging the SharePoint platform, DesignShare Foundation delivers a true solution for the needs of manufacturing information workers to communicate and collaborate on all product information including 2D and 3D, to support many different business performance improvement initiatives. Because manufacturing information workers are not typically engineers, DesignShare Foundation builds on Actify's award-winning ease of use to reach a broad spectrum of users and provide capabilities for finding, using, sharing and managing the information in addition to simply "viewing" it.

## *Innovation Through Collaboration*

Unlike product data management (PDM) and product lifecycle management (PLM) systems, Actify DesignShare Foundation is affordable, easy to work with, simple to deploy and equally well-suited for use by small teams or large enterprises. If your company designs or manufactures mechanical products, and wants to both facilitate CAD data collaboration and control the communications process and information- DesignShare Foundation is the answer.

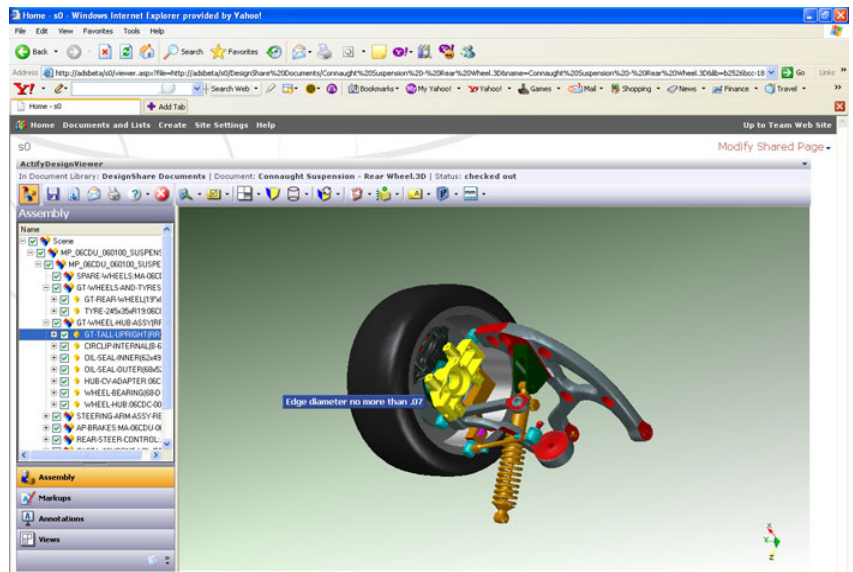


*The DesignShare Foundation Uploader makes it easy to publish a single Native CAD file or an entire folder, while maintaining the folder structure. Monitor your files as they upload and manage the process with pause, resume, stop and remove controls.*

# Key DesignShare Foundation Features

## Find

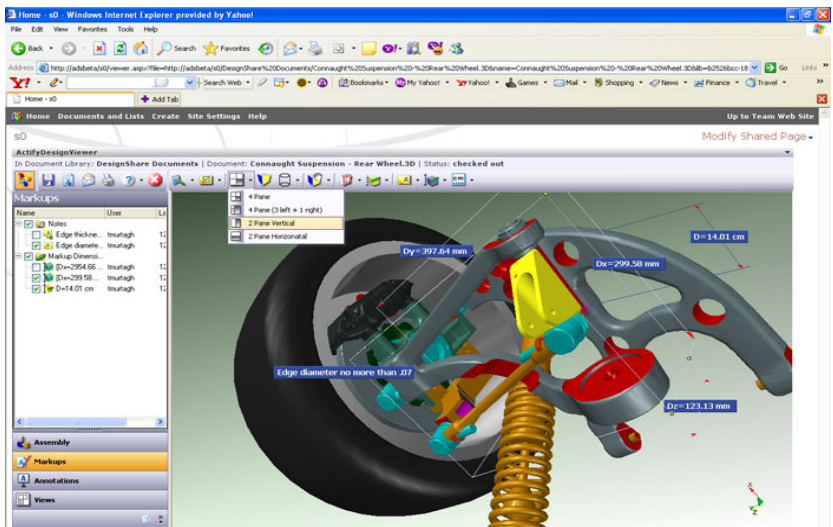
One of the most difficult tasks manufacturing information workers are confronted with is locating the information that is required to complete the task at hand. Using DesignShare Foundation, this becomes much easier as information can now be organized in whatever way, using whatever data structure, is relevant to the people in the organization. Metadata that is exposed as a result of the DesignShare Foundation process of converting 2D and 3D, such as part numbers, geometrical attributes, etc. can be used in search queries to locate relevant product information. Search scope can be as limited or expansive as the customer desires.



Navigate assembly trees to view 3D CAD data.

## Use

DesignShare Foundation centralizes and allows the automation of publishing from native CAD files to Actify's system neutral .3D. With DesignShare's Viewer, Browser, and Uploader web parts, users have the ability to view, measure, and markup 2D and 3D data directly within SharePoint. Furthermore, DesignShare Foundation, when used with Actify's SpinFire Professional and SpinFire for Microsoft Office, enables the authoring of rich SpinFire and Office documents with static or interactive product information.



Mark up, measure, and perform section views on your CAD data.

## Share

Through the managed, server-based SharePoint environment, DesignShare Foundation is able to provide secure, easy-to-use, and customizable browser-based worksites that allow users to manage all relevant documents, not just .3D. By having a centralized location for all product information, users can access and upload data from anywhere, anytime.

## Manage

DesignShare Foundation has the ability to control all information pertinent to a project or task. With the DesignShare web parts, SharePoint users can manage collaboration processes that require access to all product information including 2D and 3D data. Users can manage document ownership, associations, and ensure that all data is versioned, secured and reflects the systems of records.

## DesignShare Foundation Web Parts for Accessing the SharePoint Platform

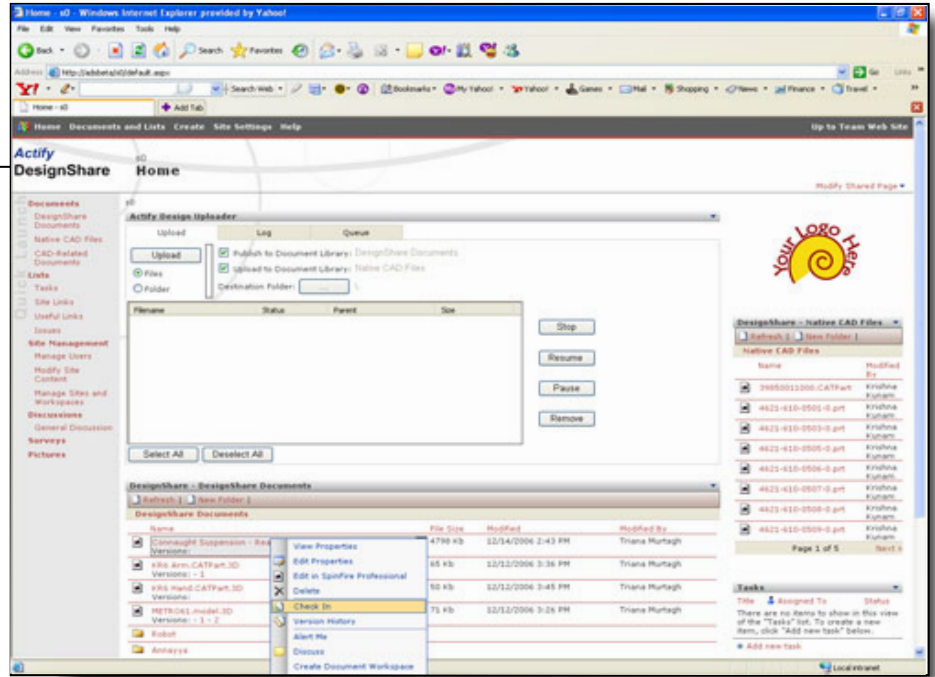
DesignShare Foundation comprises the following components which enhances any SharePoint site:

**DesignShare Viewer**--Open, view, cross-section, dimension, pan, zoom, and rotate CAD files; add markups and notes; navigate the 3D model assembly tree.

**DesignShare Browser**--Browse your enterprise's parts library to quickly find and access specific project or CAD data.

**DesignShare Uploader**--Upload files for batch processing according to the parameters you select. Manage publishing activities; submit, modify and cancel jobs. Monitor interactively or in a batch mode error processing and completion status.

The DesignShare Browser gives you visibility into an enterprise's parts library to quickly locate and access specific project or CAD data.



## Technical Specifications

### Publishing Computer

#### Software:

- Microsoft Windows 2003 Server with IIS installed and running
- .NET Framework 1.1

#### Hardware:

- **Minimum**
  - Pentium 4 class 2.4GHz CPU
  - 1GB RAM
  - OpenGL-compliant video card with 16MB RAM
- **Recommended**
  - Pentium 4 class 3GHz CPU
  - 2GB RAM
  - NVIDIA-based OpenGL video card with 32MB RAM

*Note: Performance and memory required is largely dependent on the format and size of each source native file.*

### Actify DesignShare Server Computer

#### Software:

- Microsoft Windows 2003 Server with IIS installed and running
- Microsoft SharePoint Services 2003 or SharePoint Portal Server 2003
- .NET Framework 1.1

#### Hardware:

- **Minimum**
  - Pentium 4 Class 2.4 GHz CPU
  - 1GB RAM
- **Recommended**
  - Pentium 4 Class 3GHz or faster CPU
  - 2GB or more RAM

### Client Computer

#### Software:

- Microsoft Windows XP or Microsoft Windows 2004 SP4

#### Hardware:

- **Minimum**
  - 500MHz CPU
  - 256MB RAM
  - OpenGL-compliant video card with 16MB RAM
  - 100 MB of free hard disk space
- **Recommended**
  - 1GHz or faster CPU
  - 512MB or more RAM
  - NVIDIA-based OpenGL video card with 32MB RAM
  - 200MB of free hard disk space

*\*Please note that the Publishing Computer and the Server Computer must be two separate machines.*

**Actify's technology** represents the most advanced tools available in Digital Design Communication. Using Actify's compact and secure .3D format, users can access, publish, store, view, mark-up, share, and distribute 2D/3D CAD files-throughout your global enterprise and worldwide supply chains, easily and securely. Actify Solutions are made possible through partnerships with Microsoft, Adobe, Clarizen, ShareViz, and AirZip.