

# ORACLE'S® AUTOVUE™ OUTPUT MANAGEMENT FOR SAP®

## KEY FEATURES AND BENEFITS

### KEY FEATURES

- Business object and business process Integration
- Native document viewing & printing
- Hundreds of supported formats
- Standard SAP Browse, search and output functions
- Document comparison
- Renditions generation
- Metadata integration
- Watermarking & stamping
- Enforcement of existing SAP security
- Support for complete data models of SAP including document and product structures

### KEY BENEFITS

- Dramatically increase business process printing
- Reduce the costs of data duplication and IT overhead
- Single version of the truth for critical business processes
- Access crucial document information with a single solution that supports hundreds of document formats
- Leverage your SAP standards solutions
- Enable comprehensive Output Management within and your organization
- Maintain document integrity and set a higher level of document security
- Achieve faster time to market

*Oracle's AutoVue Output Management for SAP is a Printing and Digital Output Solution that adds powerful and user-friendly capabilities to SAP Asset Lifecycle Management (ALM), SAP Product Lifecycle Management (PLM), SAP Document Management System (DMS) and other external content repositories. The resulting solution provides an efficient, flexible, and scalable method to collate sets of documents and print or distribute digitally with full compliance with SAP standards and business processes.*

*SAP customers can make dramatic increases in business process productivity in areas such as Plant Maintenance, Production Orders and Bills of Materials Management.*

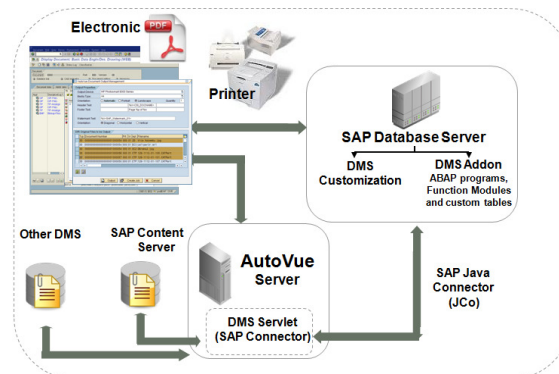
### Extend the Value of Your SAP Investment

Oracle's AutoVue application allows over 450 application types to be viewed and interrogated and as a result is an ideal engine for document output management as it can output to supported windows devices almost any application file or can be used to convert to other standard formats such as PDF, TIF or JPEG.

Through the use of AutoVue Web Services, SAP customers can output any application file held within the SAP DMS or hyperlinked from other accessible sources, such as network drives.

SAP provides a comprehensive environment for managing all product-related information. Oracle's Output Management for SAP enables users to efficiently work with all product documents that need to be Output through SAP.

**Figure 1: Integration occurs at the server level allowing users to instantly access documents stored in SAP for Output**



### Output Hundreds of Document Types without conversion

With hundreds of supported file formats, including 2-D computer-aided design (CAD) drawings, 3-D models, printed circuit board layouts and schematics, and Microsoft Office documents, Oracle AutoVue Output Management allows users to access, view, and Output virtually any type of document without the need for conversion.

Lifecycle's Connector for AutoVue and SAP also works directly with the SAP Product Lifecycle Management CAD integrations to provide visualization for any supported native CAD format, as well as electronic design automation (EDA) format, portable document format (PDF), and Microsoft Office.

By leveraging the Oracle AutoVue Output Management solution, SAP customers can make significant gains in productivity, maintain SAP standards and eliminate the costs of duplicating data, creating neutral formats and purchasing and supporting authoring applications.

### Business Process Printing

Oracle's AutoVue Output Management for SAP automates the process of business printing or distribution – Maintenance Orders, Production Orders or Procurement processes all require multiple documents and SAP forms to be collated together to form packs of information, whether for electronic distribution or printing purposes.

The Document Output Management solution from Oracle AutoVue allows documents that are attached to structures or processes to be pulled together automatically along with cover pager and closure pages (SAP forms). Additional benefit is realized as Oracle AutoVue supports over 450 native file formats, negating the need to convert to neutral formats creating document duplicates, which adds complexity and IT expense.

To ensure the documents are controlled, watermarking and stamping can also be applied.

**Figure 3: Output and print document structures from plant maintenance orders and other SAP transactions**



**RELATED PRODUCTS**

**CUSTOMER SPECIFIC ENHANCEMENTS**

Our SAP consultants can deliver customization where additional requirements may be needed. This may be in the form of integration into other functional areas of SAP such as cFolders, Portal or Mobile.

**Distribution for SAP DMS**

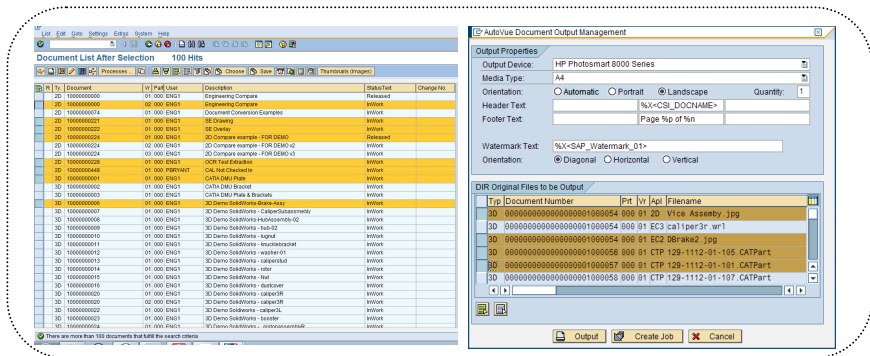
**Find Documents Quickly**

The Solution for AutoVue and SAP provides browse-and-search functions that enable team members to quickly access and output files stored in SAP directly

**Output Data Natively**

AutoVue products allow users to open, view, and review original documents in their native format without undergoing costly, error-prone conversions. This eliminates the tedious task of creating and managing a double set of data and ensures that users are always working with the latest version of a file so that business decisions are based on original native documents.

Figure 2: Output any document type for printing or digital distribution



**Increase Security**

AutoVue products deliver instant and secure access to original documents without leaving a document footprint on the client’s machine. The AutoVue solution and SAP is structured so that the original document, with its proprietary data, is never transferred to the client machine. Only a rendering of a document is transmitted to the client, thereby safeguarding valuable intellectual property.

The Document Output Management Solution from Oracle AutoVue for SAP is a robust and scalable solution that delivers a cost effective output management solution for SAP customers.

**Contact Us**

For more information please visit <http://www.lifecycle-tech.com>

or call +44 208 242 4275

Or email [sales@lifecycle-tech.com](mailto:sales@lifecycle-tech.com)

Copyright © 2009, Lifecycle Technology Ltd and/or its affiliates. All rights reserved.

This document is provided for information purposes only, and the contents hereof are subject to change without notice. This document is not warranted to be error-free, nor is it subject to any other warranties or conditions, whether expressed orally or implied in law, including implied warranties and conditions of merchantability or fitness for a particular purpose. We specifically disclaim any liability with respect to this document, and no contractual obligations are formed either directly or indirectly by this document. This document may not be reproduced or transmitted in any form or by any means, electronic or mechanical, for any purpose, without our prior written permission.

Oracle is a registered trademark of Oracle Corporation and/or its affiliates. Other names may be trademarks of their respective owners. SAP is a registered trademark of SAP AG and/or its affiliates. Other names may be trademarks of their respective owners.