

AUTOVUE SOLUTIONS FOR SAP

KEY FEATURES AND BENEFITS

KEY FEATURES

- Native document viewing
- Hundreds of supported formats
- Real-time collaboration
- Browse-and-search function
- Document comparison
- Digital mockup
- Cross-probing
- Measurements
- Markups, annotations, and comments saved as distinct overlays
- Renditions generation
- Metadata integration
- Enforcement of existing SAP security
- Support for complete data models of SAP including document and product structures

KEY BENEFITS

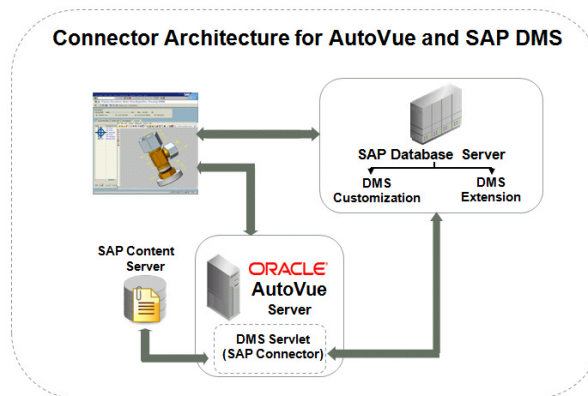
- Access crucial document information with a single solution that supports hundreds of document formats
- Leverage SAP solutions
- Enable comprehensive collaboration within and beyond your organization
- Maintain document integrity and set a higher level of document security
- Achieve faster time to market

Lifecycles Connector for Oracle's AutoVue and SAP is a Web-based solution that adds the powerful and user-friendly viewing, markup, digital mockup, and real-time collaboration capabilities of Oracle's AutoVue enterprise visualization solutions to SAP Asset Lifecycle Management (ALM), SAP Product Lifecycle Management (PLM), SAP Document Management System (DMS) and other content repositories. The resulting solution provides an efficient, flexible, and secure method to communicate information, share ideas across the global enterprise, and achieve faster time to market.

Extend the Value of Your SAP Investment

SAP provides a comprehensive environment for managing all product-related information. AutoVue enterprise visualization products enable users to view, markup, print and collaborate on documents without requiring the authoring applications and without altering the original document. Lifecycle's Connector for AutoVue and SAP bridges these two solutions to enable users to efficiently work with product documents that need to be viewed through SAP.

Figure 1: Integration occurs at the server level allowing users to instantly access documents stored in SAP for viewing, printing, markup, and real-time collaboration.



Open and View Hundreds of Document Types

With hundreds of supported file formats, including 2-D computer-aided design (CAD) drawings, 3-D models, printed circuit board layouts and schematics, and Microsoft Office documents, AutoVue enterprise visualization products allow users to access, view, and review virtually any type of document. Lifecycle's Connector

for AutoVue and SAP also works directly with the SAP Product Lifecycle Management CAD integrations to provide visualization for any supported native CAD format, as well as electronic design automation (EDA) format, portable document format (PDF), and Microsoft Office. Users can create markups or annotations on all document types, which are saved back in the SAP repository.

By leveraging a single solution, the cost of purchasing, managing, and training employees to use multiple viewing and authoring applications is eliminated.

Share Information and Collaborate Efficiently

AutoVue enterprise visualization products provide a rich set of markup entities that will help you communicate change requests, comments, observations, and instructions effectively. All markups and annotations are created as distinct overlays on top of the original file and saved directly into the SAP repository. Reviewers can then turn markup layers on and off as needed.

The real-time collaboration features in AutoVue products foster teamwork throughout the project lifecycle by connecting everyone in the global enterprise. Through a simple web browser geographically dispersed team members, suppliers, partners, and customers can instantly access, view, and mark up any document and share information regardless of geographical location, technical skills, or the applications they use.

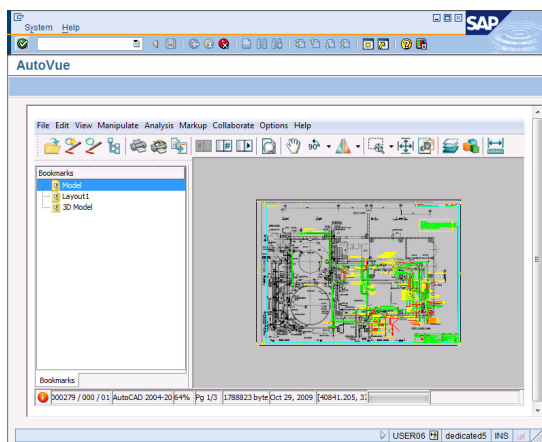


Figure 2: Collaborate in real time to expedite the design review process.

Find Documents Quickly

Lifecycles Connector for AutoVue and SAP provides browse-and-search functions that enable team members to quickly access and view files stored in SAP directly from AutoVue applications.

Access Data Natively

AutoVue products allow users to open, view, and review original documents in their native format without undergoing costly, error-prone conversions. This eliminates the tedious task of creating and managing a double set of data and ensures that users are always working with the latest version of a file so that business decisions are based on original native documents.

RELATED PRODUCTS

CUSTOMER SPECIFIC ENHANCEMENTS

Our consultants can deliver customisation where additional requirements may be needed. This may be in the form of integration into other functional areas of SAP such as cFolders, Portal or Mobile.

Increase Security

AutoVue products deliver instant and secure access to original documents without leaving a document footprint on the client's machine. Lifecycle's Connector for AutoVue and SAP is structured so that the original document, with its proprietary data, is never transferred to the client machine. Only a rendering of a document is transmitted to the client for viewing and markup, thereby safeguarding valuable intellectual property. The original document is never altered and all markups and annotations are directly saved into the SAP repository.

Validate Design Integrity and Detect Potential Issues Earlier

With AutoVue the design review process is simplified. AutoVue makes it easy to detect potential problem areas by allowing users to examine designs in detail, compare files among revisions of a document stored in the SAP repository, or combine mechanical and electrical drawings to verify fit. Design integrity can be validated more quickly and easily in a reliable manner.

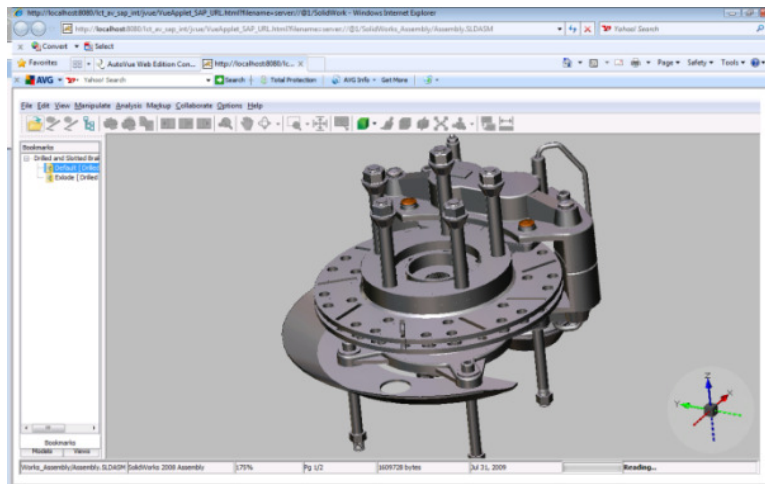


Figure 3: Identify errors early in the lifecycle to reduce time to market.

Contact Us

For more information about Lifecycle's Connector for Oracle AutoVue and SAP please visit <http://www.lifecycle-tech.com>

Or email sales@lifecycle-tech.com

Tel +44 208 242 4275

Copyright © 2009, Lifecycle Technology Ltd and/or its affiliates. All rights reserved.

This document is provided for information purposes only, and the contents hereof are subject to change without notice. This document is not warranted to be error-free, nor is it subject to any other warranties or conditions, whether expressed orally or implied in law, including implied warranties and conditions of merchantability or fitness for a particular purpose. We specifically disclaim any liability with respect to this document, and no contractual obligations are formed either directly or indirectly by this document. This document may not be reproduced or transmitted in any form or by any means, electronic or mechanical, for any purpose, without our prior written permission.

Oracle is a registered trademark of Oracle Corporation and/or its affiliates. Other names may be trademarks of their respective owners. SAP is a registered trademark of SAP AG and/or its affiliates. Other names may be trademarks of their respective owners.