



Model Compare Plug-In Build 1331 Release Notes

August 7, 2009

Description

The Model Compare Plug-In compares two sets of parts or assemblies and displays the material that has been added or removed.

By default the added material will be shown in blue and the removed material will be shown in red, but users may change the colors of the added and removed material.

Requirements

- SpinFire Professional 8.3 Build 1212 or later
- Reader Build 1247
- .NET 2.0

Improvements/Bug Fixes

The only issues addressed in this release fixes a problem with compatibility with other plug-ins. Plug-ins were developed with different versions of .NET and when SFP is launched, not all plug-ins would activate if other plug-ins were installed. With this build the incompatibility issue has been resolved.

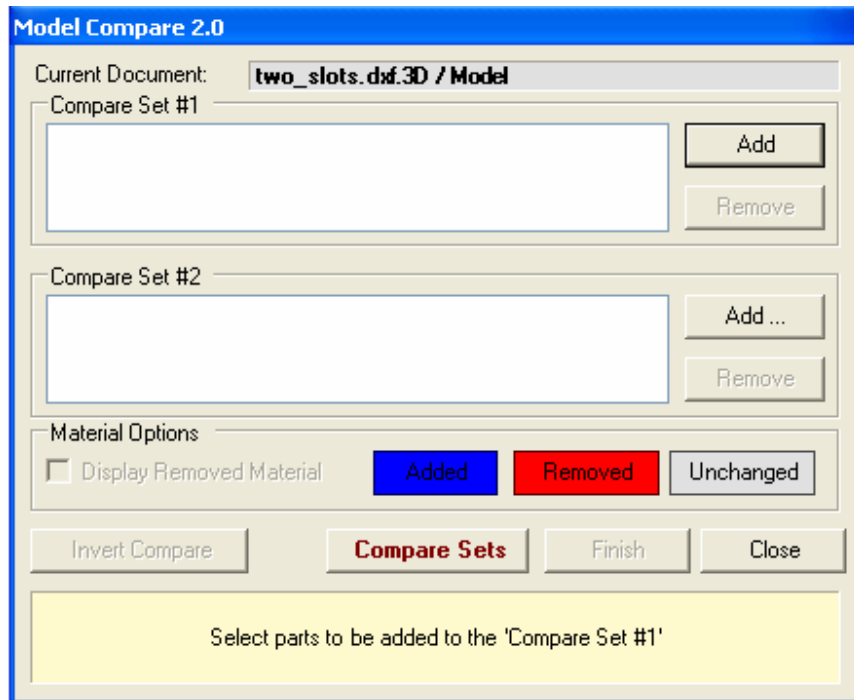
Known Issues

Visual Comparison Only—The Model Compare Plug-In produces a graphical effect that can be used to visually compare two models. Because part transition tolerances can affect precision, this should not be used to provide an exact volume comparison but should be used only for a visual comparison of two models.

Previous versions—Any previous version of this plug-in must be uninstalled before this version can be installed.

Location on SpinFire Pro Interface

- **Edit Menu Toolbar:** The edit menu toolbar has a new **Compare Model** option which brings up the dialog.



Procedures

To Compare Two Models

1. Invoke the **Model Compare Dialog** from the edit menu on the toolbar.
2. The model compare dialog gives the user options to select the parts/assemblies into each of the two compare sets.
3. After the selection of parts/assemblies for the two sets, the user could compare the two models for the “Added” material by clicking on **Compare Sets**.
4. The user could choose to display either the added material or the removed material by selecting/deselecting the Display Removed material in the Material Options section.
5. There is an additional option to invert compare which inverts the comparison of one set over the other (compare set #1 over #2, or inverting would compare compare set# 2 over #1) by simply clicking on the **Invert Compare** button.
6. After the comparison is completed the user could choose to save the view by clicking on **Finish** which displays the view save menu where the user could enter the desired view name.
7. To cancel the model comparison at any point of comparison the user could click on **Close**.

To Change the Default Color of the Added, Removed, or Unchanged Material

1. While the Model Compare dialog is open, click the **Added**, **Removed**, or **Unchanged** button and this opens the Color dialog box.
2. Choose a color and click **OK**.