



## DesignShare (WSS) Plug-In Build 1331 Release Notes

August 7, 2009

### Description

The WSS Plug-In allows SpinFire Professional to open files stored on a Windows SharePoint Services server. This plug-in is especially useful for organizations that use Actify DesignShare (which runs on a SharePoint server).

If the file is located on a server running Actify DesignShare, then users can also check out a file and check in changes made to the file back to the ADS server.

### Requirements

- SpinFire Professional 8.3 or later.
- Reader Build 1247
- .Net 2.0

### Improvements/Bug Fixes


The only issued addressed in this release fixes a problem with compatibility with other plug-ins. Plug-ins were developed with different versions of .NET and when SFP is launched, not all plug-ins would activate if other plug-ins were installed. With this build the incompatibility issue has been resolved.

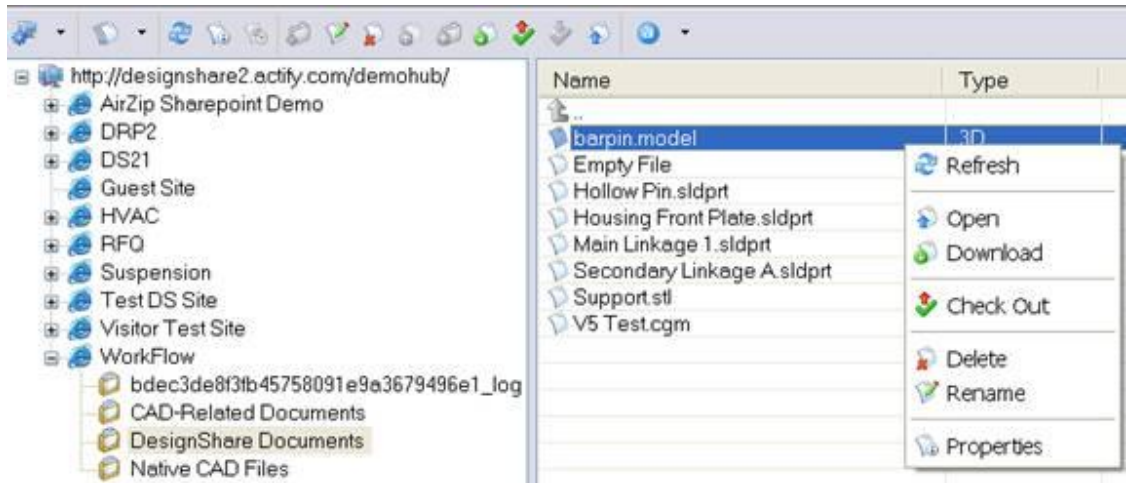
### Location on SpinFire Pro Interface

- **Menu bar:** The **File** menu contains the **SharePoint** submenu.
- **Toolbar:** Contains the **SharePoint** menu.

### Procedures

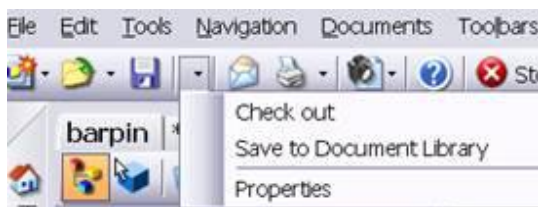
#### To Open a .3D File located in a DesignShare Document library

1. Select the "DesignShare" tab located on the Components Tab on the left
2. Select the "Manage SharePoint Connections" icon 
3. Select the "Add" button
4. Key in the following information (Substitute as needed)
  - URL: <http://designshare2.actify.com/demohub/>
  - Domain: designshare2.actify.com
  - User Name: your user name
  - Password: your password
5. If the connection is correct you will see the site listed on the left pane.
6. Expand the site to see the sub-sites and Document Libraries available
7. Select the Document Library to see the available files
8. Right Click on a file and select the desired action

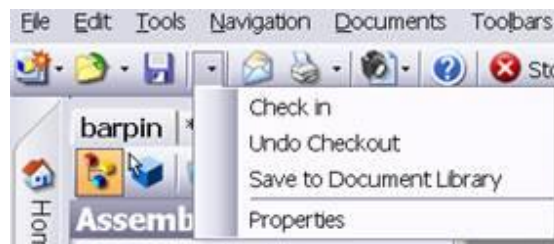


9. When you are done working on the file you have the following options, depending on how the file was opened, by selecting the SharePoint Icon in SpinFire;

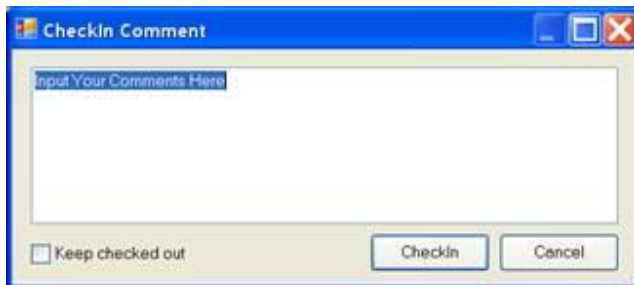
**File Opened**



**File Checked Out**



If you are checking the file back in you will also have the ability to add any comments;



The file in the DesignShare library has now been updated with this latest version, and the SharePoint versioning has been adhered to.