

AUTOVUE VUELINK INTEGRATION FOR DOCUMENTUM

KEY FEATURES AND BENEFITS

KEY FEATURES

- Web-based document viewing
- Hundreds of supported formats
- Real-time collaboration
- Browse-and-search function
- Document comparison
- Digital mockup
- 3D Walkthrough
- Work offline
- Measurements
- Markups, annotations, and comments saved as distinct overlays
- Renditions generation
- Metadata integration
- Enforce existing Documentum security
- Support for Sword's CADTop and BTM's DRAWbridge CAD integrations
- Integration of 2D and 3D complex data into Documentum

KEY BENEFITS

- Standardize visualization on a single solution that supports hundreds of document formats
- Extend Documentum collaboration
- Enhance collaboration and improve the way information is communicated
- Optimize business processes with IntelliStamp
- Maintain document integrity and share documents securely without risking IP
- Reduce costs related to the purchase of expensive software applications

Oracle's AutoVue VueLink Integration for Documentum adds the powerful document visualization and digital annotation capabilities of Oracle's AutoVue solutions to the Documentum platform, delivering web-based viewing of engineering drawings, CAD and Office documents. The AutoVue solution, along with EMC Content Management solutions, allows users to access and collaborate on engineering and asset documents across the entire enterprise, delivering a compelling solution for asset intensive industries, such as oil and gas, utilities and engineering and construction.

Extend the Value of Your Documentum Investment

EMC Content Management Solutions provide a centralized repository to publish and maintain business information. AutoVue enterprise visualization solutions enable users to view, annotate, and collaborate on documents without requiring the authoring applications and without altering the original document. AutoVue VueLink Integration for Documentum bridges these two solutions so users can efficiently open, view and review any document directly from within the Documentum environment.

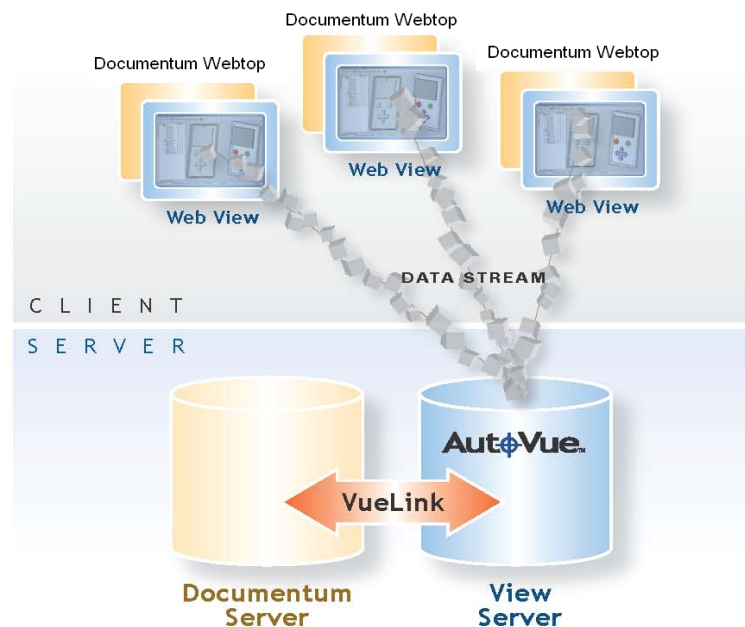


Figure 1: Integration at the server level allows users to instantly access documents stored

in Documentum for viewing, printing, annotation, and real-time collaboration.

Standardize on a Single Visualization Solution

AutoVue enterprise visualization solutions allow users to access, view, and review hundreds of document types including 2D computer-aided design (CAD) drawings, 3D models, printed circuit board (PCB) layouts and schematics, and Microsoft Office documents. By standardizing on a single solution for all visualization requirements, the cost of purchasing, managing, and training employees to use multiple viewing and authoring applications is eliminated. Organizations can greatly reduce their licensing and maintenance costs and simplify their IT infrastructure.

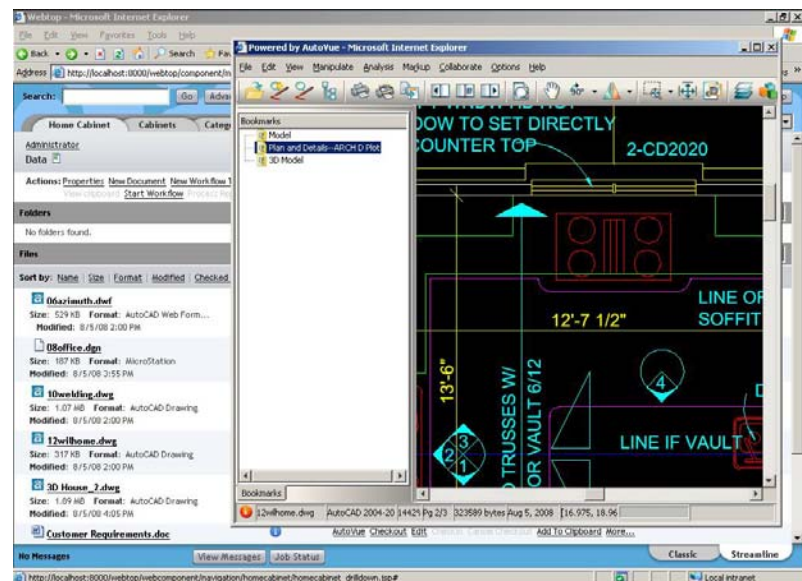


Figure 2: View documents directly from within your Documentum environment.

Expedite Reviews & Capture Reliable Audit Trail

Adding the powerful markup and real-time collaboration capabilities of AutoVue products to EMC Documentum, organizations can expedite review cycles and capture an audit trail of all changes, decisions and approvals for full accountability and compliance.

AutoVues' rich set of markup entities allows users to digitally annotate documents and effectively capture comments, change requests, and instructions within the appropriate context, which are recorded and tracked digitally. All markups and annotations are created as distinct overlays—on top of the original file—and stored directly into the Documentum repository. Reviewers can then turn markup layers on and off as needed, selecting only those that they wish to view.

No Data Conversion Required

By handling data natively, AutoVue's enterprise visualization solutions allow users to open, view, and review original documents without undergoing costly and error-prone conversions. Because file conversion is not required, the cost and complexity

of maintaining multiple viewing tools and conversion systems is eliminated, along with the tedious task of creating and managing a duplicate set of data (originals and converted files). Users can be confident that they are always working with the latest version of a file, and that business decisions are based on accurate information.

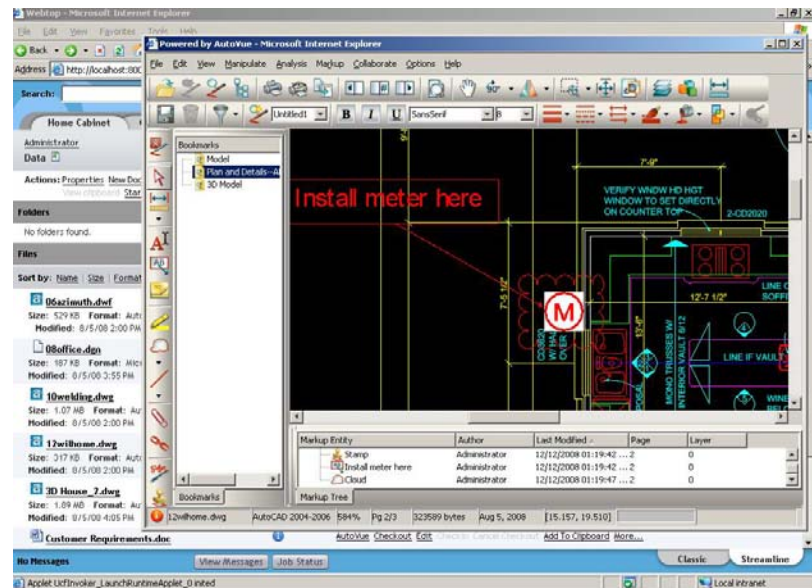


Figure 3: View documents in their native format, add and save digital markups to collaborate more effectively and efficiently.

Optimize Enterprise Business Processes

AutoVue's IntelliStamp enables electronic signing and stamping of documents with pre-defined attributes set in Documentum. Users can create custom IntelliStamp "forms" that include specific metadata, document and user information pulled directly from Documentum, and apply them to documents. Authorized reviewers can then modify, add or delete attribute values, either from Documentum or from within IntelliStamp.

With IntelliStamp, organizations can accelerate internal business processes by allowing users to trigger workflow actions, such as invoicing or time sheet generation directly from within documents reviewed in AutoVue. This direct interaction enables organizations to significantly improve business process efficiencies through workflow automation.

Share Documents Securely without Risking IP

AutoVue enterprise visualization solutions deliver instant and secure access to original documents without leaving a document footprint on the client's machine. AutoVue VueLink Integration for Documentum follows Documentum permission settings and ensures that the original document, with its proprietary data, is never transferred to the client machine. Users only have access to a rendering of a document for viewing and markup. The original document is never altered and all markups and annotations are directly saved into the Docbase.

**MAXIMIZE PRODUCTIVITY
WITH ENTERPRISE
INTEGRATION**

ORACLE'S AUTOVUE
ENTERPRISE
VISUALIZATION
SOLUTIONS

AutoVue solutions can be integrated into existing content management, product lifecycle management, or enterprise applications, such as ALM, & Project Planning to name a few. Integrated with existing enterprise systems, AutoVue connects information, people and processes, delivering anytime, anywhere access to vital information and maximizing business process efficiency.

Teams can better collaborate around their engineering and product documents and make sound business decisions, driving innovation and operational efficiency.

RELATED PRODUCTS

- AutoVue Office
- AutoVue 2D Professional
- AutoVue 3D Professional Advanced
- AutoVue EDA Professional
- AutoVue Electro-Mechanical Professional
- AutoVue Mobile

Contact Us

For more information about Oracle's AutoVue VueLink Integration for Documentum, please visit oracle.com/applications/autovue, call +1.800.363.5805 or +1.514.905.8400 to speak to an Oracle representative, or email autovuesales_ww@oracle.com.

Copyright © 2010, Oracle and/or its affiliates. All rights reserved.

This document is provided for information purposes only, and the contents hereof are subject to change without notice. This document is not warranted to be error-free, nor is it subject to any other warranties or conditions, whether expressed orally or implied in law, including implied warranties and conditions of merchantability or fitness for a particular purpose. We specifically disclaim any liability with respect to this document, and no contractual obligations are formed either directly or indirectly by this document. This document may not be reproduced or transmitted in any form or by any means, electronic or mechanical, for any purpose, without our prior written permission.

Oracle is a registered trademark of Oracle Corporation and/or its affiliates. Other names may be trademarks of their respective owners.