

# NEW IN AUTOVUE ENTERPRISE VISUALIZATION, RELEASE 20.1.1

## KEY FEATURES AND BENEFITS

### TOP NEW FEATURES AND ENHANCEMENTS

- Augmented Business Visualization framework for Asset Lifecycle Management
- Work Order Packet printing & collating improvements
- Improved zoom levels for PDF files
- Select and copy text from PDF files
- Snapping measurements in vector-based PDF files
- Role-based UI for integrated environments
- Problematic file identification
- New 3D and 2D formats
- Mobile enterprise visualization solutions for Oracle ALM

### KEY BENEFITS

- Increase wrench time and reduce errors by enabling work order packet printing
- Facilitate work order planning and streamline asset reliability management with Augmented Business Visualization
- Reduce building permit reviews and processing times
- Improve stability, reliability and uptime
- Improve user productivity with role-based UI
- Reduce review times and provide faster feedback
- Drive operational excellence with visual mobile solutions for field workers

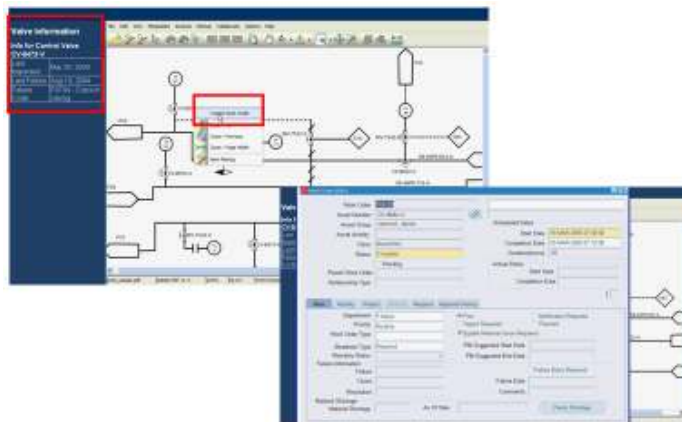
*AutoVue Enterprise Visualization solutions deliver visual access and collaboration capabilities to documents, data and information within any application or business process. AutoVue 20.1.1 includes several enhancements, as well as innovative visual solutions which deliver business transformation and efficiency improvements in asset management and building ePermitting use cases. The release reinforces AutoVue's enterprise readiness with stability improvements and the availability of a role-based UI which can be tailored to suit the varying needs of enterprise users. It also includes timely support for important new formats, such as AutoCAD 2012.*

### Visualization Enhancements for Asset Management Use Cases

To maximize operational efficiency and asset availability AutoVue 20.1.1 delivers a series of printing enhancements and Augmented Business Visualization (ABV)-based solutions which streamline work order planning and execution and provide operations and maintenance teams with total visibility into mission critical asset information.

#### Augmented Business Visualization for Asset Lifecycle Management (ALM)

AutoVue is an enabling platform which eliminates barriers between structured and unstructured data to deliver augmented business visualization (ABV) for enterprise users. Through the use of AutoVue hotspots the value of business data is augmented by providing two-way, actionable links between documents (unstructured data) and structured data, such as part numbers in enterprise resource planning (ERP) systems. This enables users to access ERP data, such as parts information, and trigger actions, like creating a maintenance service request in ERP directly from documents. Data from ERP systems can also be dynamically displayed in documents, like floor plans,



**Figure 1. Dynamically display information from ALM systems and trigger actions in ALM or other enterprise systems directly within documents**

via AutoVue and turned into color-based visual reports which provide in-context asset or project information to users. This one-stop shop for in-context information improves productivity and saves time spent searching for information in multiple systems.

Partners\* are leveraging the power of ABV to build differentiated service offerings which enhance asset management workflows for Oracle EBS eAM customers. Maintenance planners can, for example, retrieve asset information from eAM, including asset ID, work order or safety information, while navigating engineering or technical documents. Planners can also initiate actions directly within documents by clicking on hotspot links to create work orders, check parts availability, view in progress maintenance work or access other related asset documentation. By exposing asset information in documents, maintenance planning and productivity are improved and reliability centered maintenance processes are supported allowing users to identify underperforming assets and take corrective actions.

#### **Mobile Enterprise Visualization Solutions for Asset Management**

Partners\* are enhancing their mobile solutions for Asset Lifecycle Management applications like Oracle EBS eAM and PeopleSoft Maintenance Manager with AutoVue visualization integration. In doing so they provide workers in the field with digital access to all pertinent information and documents needed to perform their work – including drawings and existing annotations, directly on their tablet PCs. With AutoVue workers can submit updates on a work order indicating what was changed or any problems that were encountered, and can include annotations on existing drawings and even photographs taken on site. By providing field technicians with access to key asset and work related information on their mobile devices these solutions reduce paperwork and unproductive tasks, and increase first-time fix rates.

#### **Easy Assembly of Work Order Packets**

AutoVue Document Print Services (DPS) deliver a robust set of APIs which can be leveraged within applications to automate and process high volume printing operations. In preparation for maintenance and repair activities, maintenance planners can automate the printing of work orders and corresponding attachments, including engineering drawings, equipment diagrams, material safety datasheets, standard operating procedures, pictures, for use during repair work.

With AutoVue DPS 20.1.1 users can more easily print and collate multiple documents into a single work order packet. The packet includes a cover page, which lists all the documents included in a given packet, as well as a summary page listing all the files, packet ID, number of pages, date, and time the packet was printed, and status of the printouts. Every page of each document within the work packet can be traced back to the packet ID indicated in the header. These new capabilities streamline work order packet creation by facilitating manual document collation and improve productivity and wrench time by ensuring that maintenance workers have the right documents before heading out into the field to execute repairs.

AutoVue DPS 20.1.1 also provides access to the document size, allowing printouts to be routed to the appropriate printer, reducing errors and paper waste.

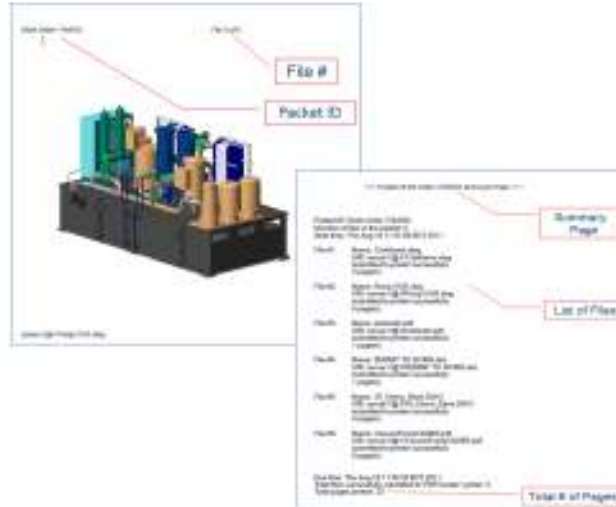
\* For further information about partner solutions, please contact an AutoVue representative.

**INTEGRATE WITH  
ENTERPRISE  
APPLICATIONS**

AutoVue solutions can be integrated into existing content management, product lifecycle management, or enterprise applications, such as ALM and Project Management to name a few. Integrated with existing enterprise systems, AutoVue connects information, people and processes, delivering anytime, anywhere access to vital information and maximizing business process efficiency. Teams can better collaborate around their engineering and business documents and make sound business decisions, driving innovation and operational efficiency.

**RELATED PRODUCTS**

- AutoVue 2D Professional
- AutoVue 3D Professional Advanced
- AutoVue EDA Professional
- AutoVue Office
- AutoVue Mobile
- AutoVue VueLink Integrations
- AutoVue Document Print Service



**Figure 2. Easily assemble work order packets with new headers, cover & summary pages**

**Accurate and Accelerated Digital Building Permit Reviews**

When it comes to building permits, municipalities and local governments are moving from paper-based workflows to electronic building permitting systems which leverage AutoVue to streamline and accelerate the digital permit application and approval process, allowing them to offer improved service delivery to citizens.

During that process various teams review submitted plans and documents, which are typically in PDF format. AutoVue 20.1.1 includes several enhancements for viewing of PDF documents, which expedite and streamline the digital permit review process and allow municipalities to provide timely and more complete feedback to applicants.

**PDF Zoom levels:** AutoVue 20.1.1 provides more intuitive zoom levels while searching, switching pages, or moving between markups in a PDF file. The improved navigation of PDF files facilitates the review of permit applications, as well as case-related documents and associated regulations.

**Snapping Measurements:** When working with vector-based PDF files reviewers can take measurements by snapping to end or mid-points of an entity, as well as shapes in a PDF file for area measurements. These enhancements enable reviewers to more accurately verify that plans and drawings are in compliance with safety regulations, for example, ensuring that fire exits are sufficiently large and meet code.

**Select and Copy Text from PDF Files:** In AutoVue 20.1.1 users can now select, copy and paste text from PDF files, improving the efficiency with which feedback can be delivered. For example, while reviewing a permit application, a municipal employee may need to include safety regulations to which the applicant must adhere. Rather than manually typing entire sections of regulation code, they can simply copy and paste the text from a PDF file into an AutoVue markup note.

**Enterprise Ready Visualization**

AutoVue 20.1.1 continues its focus on enterprise readiness by delivering enhancements that provide various enterprise users with custom UIs, as well as significant stability improvements for improved server uptimes.

### Role Based UI in Integrated Environments

AutoVue 20.1.1 provides IT managers with the ability to customize the AutoVue user interface and provide enterprise users with UIs that are specific to their roles. Role-based UIs are implemented by creating custom UI layouts which are then assigned to users through AutoVue integration customization. Based on their role, each user is presented with the appropriate UI. This customization improves business processes and increases workforce productivity by ensuring delivery of information and actions tailored to each group or role.

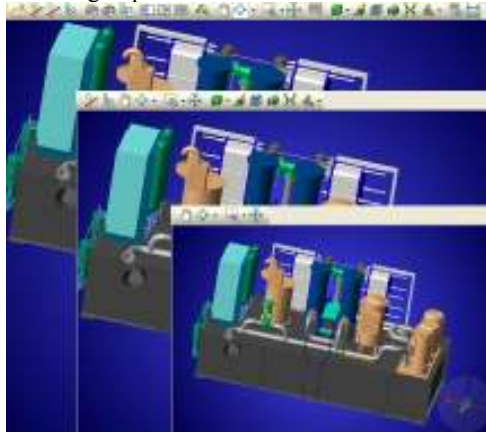


Figure 3. Tailor the AutoVue use interface to meet the needs of specific groups or roles

### Improved Troubleshooting for Stability Issues

The disruption of a server crash can wreak havoc on productivity and lead to long delays. AutoVue 20.1.1 includes stability improvements which facilitate the identification, logging, and quarantine of problematic files on a server. In the event of a server crash, administrators receive a list of all files that were open on the document server at the time of the crash. With the culprit files easily identified, IT managers can quickly remove them, ultimately delivering improved uptime for users.

### Timely New Format Support

Release 20.1.1 introduces timely support for new formats and includes fidelity improvements for existing formats, as well as several enhancements to PDF files. The following new formats have been added to 20.1.1.

- **MCAD:** Inventor 2012, AutoCAD Mechanical 2012, Unigraphics NX7 & NX7.5
- **2D CAD:** AutoCAD 2012
- **Office:** Adobe Acrobat 10

Note: Due to limited usage and low customer demand AutoVue 20.1.1 has dropped support for certain formats. For the complete list please refer to the AutoVue 20.1.1 Release Notes.

### Contact Us

For more information about Oracle's AutoVue enterprise visualization solutions, call +1.800.363.5805 or +1.514.905.8400 to speak to an AutoVue representative, email us at [autovuesales\\_ww@oracle.com](mailto:autovuesales_ww@oracle.com) or visit <http://www.oracle.com/autovue>

Copyright © 2011, Oracle and/or its affiliates. All rights reserved. This document is provided for information purposes only, and the contents hereof are subject to change without notice. This document is not warranted to be error-free, nor is it subject to any other warranties or conditions, whether expressed orally or implied in law, including implied warranties and conditions of merchantability or fitness for a particular purpose. We specifically disclaim any liability with respect to this document, and no contractual obligations are formed either directly or indirectly by this document. This document may not be reproduced or transmitted in any form or by any means, electronic or mechanical, for any purpose, without our prior written permission. Oracle is a registered trademark of Oracle Corporation and/or its affiliates. Other names may be trademarks of their respective owners.