

Release Notes

Overview

SpinFire 10 represents a large effort to improve on SpinFire 9.0.

With SpinFire 9.0 we improved reading large files.

SpinFire 10.0 focused on stability, fixing issues, Windows 7 compatibility and adding much needed enhancements.

Windows 7 compatibility: Microsoft changed many things in Vista and Windows 7, SpinFire 10 is a fully compatible Windows 7 application that does not require compatibility mode anymore. We also added the support for the new thumbnails for .3D files in the Windows file explorer which can be now displayed in various sizes.

Other changes include the use of the new File Open dialog, how the .3D file is associated to SpinFire and how the over all application behaves with the new Windows 7 window management.

The new publishing engine

Another big improvement in SpinFire 10 is the redesigned streamlined importing process. This new version of SpinFire uses the new publishing engine as component driving the import procedure. This new engine called "PubCore" and is the same used in our server product Centro 4.1. It brings speed improvement and stability to the import process.

Because of the use of PubCore we also improved the management of importer settings. All importers now show a consistent user interface for changing their properties.

The new modular install

Major improvements have been made in the install procedure. SpinFire 10 installation is more modular and allows importers and plug-ins to be installed and updated directly from within the application. We added also a feature called "importer auto-deploy" that allow to download and install the appropriate importer when opening a CAD file.

In the options/plug-in page you can now browse, download, and install new and existing plug-ins. As soon as new modules are made available from Actify a notification will be shown in the start-up page of the application. No need to visit a web-site, no need to log-in. Just a click on the link and the new functions will be downloaded and installed.

These improvements allow to easier updates of importers from Actify allowing to SpinFire to be better up to date with recent versions of CAD systems and their format change.

Use of .NET 4.0

Starting with SpinFire 9.0 we started the process to move our code-base to the .NET platform from Microsoft.

In this release many more components have been converted to .NET. The application requires .NET V4.0 to be installed on the target machine.

New Features

We also have been adding features to SpinFire 10. Some as part of the main application, some as external plug-ins to allow you to better customize SpinFire to your needs.

Minimum Distance and Minimum Thickness plug-in.

This plug-un allows to compute the minimum distance from two arbitrary set of geometries or to compute the minimum thickness of a single part.

[Read more about Minimum Distance ...](#)

[Read more about Minimum Thickness ...](#)

Projected Area

This feature allows to projects the surface area of a part or parts onto a plane. It is similar to casting a light on the parts and calculating the surface area of the shadow on the wall.

[Read more ...](#)

Better Home Page

The new SpinFire start-up screen now shows three main areas of interest:

- **Messages:** here SpinFire display useful messages about the license in use, available updates for importers or plug-ins, or warning messages about components that may fail to load or activate.
- **Recent Document:** here SpinFire provides a list of the most recent open files (.3D or native CAD files). Along with the file name SpinFire shows a small images of the model or drawing, the date when the file was last opened, and the size of the file.
- **Status, Options and Links:** on the left side of the home page SpinFire features useful links to access common area of the application or useful web pages available on Actify web site.

[Read more ...](#)

Importers AutoDeploy

If a user attempts to open a native CAD file which requires an importer that is not installed, SpinFire's AutoDeploy will ask the user if they wish to install the importer. As soon as the importer installs then the native CAD file is imported into SpinFire 10.

Improved Importer Updating

If SpinFire 10 detects a newer version of any importer or plug-in is available, a message will appear on the Home page as well as on the Importers/Plug-Ins pages. The user can then update directly from the Importer or Plug-In page. This improvement allows Actify to update and add importers and plug-ins without requiring users to reinstall a new version of SpinFire.

Improved Settings

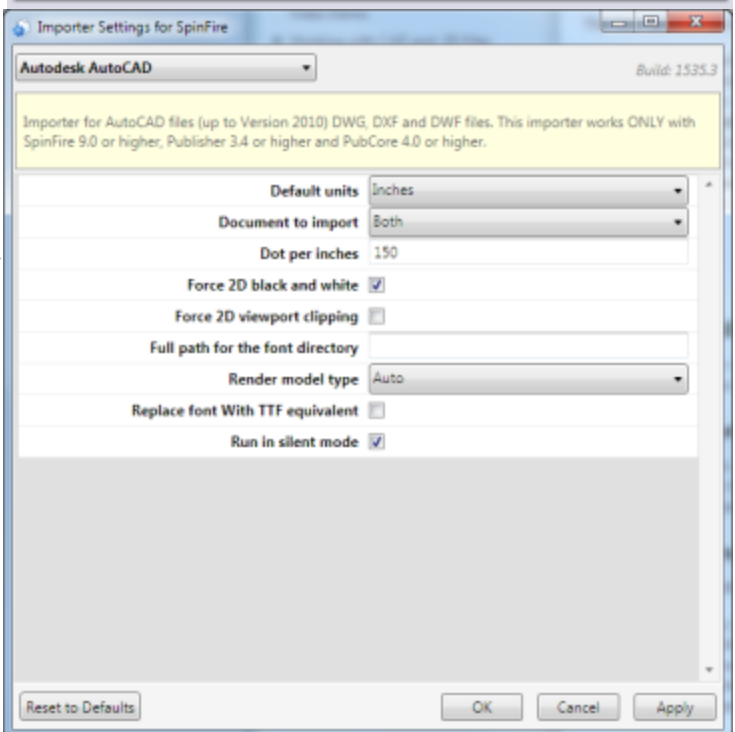
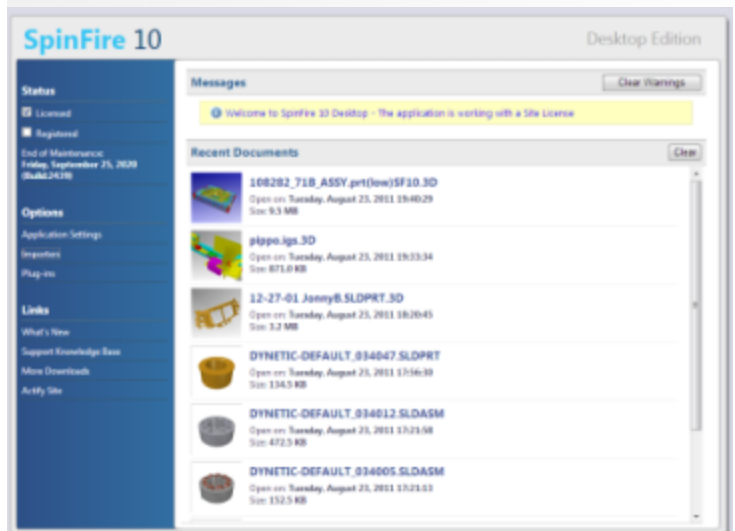
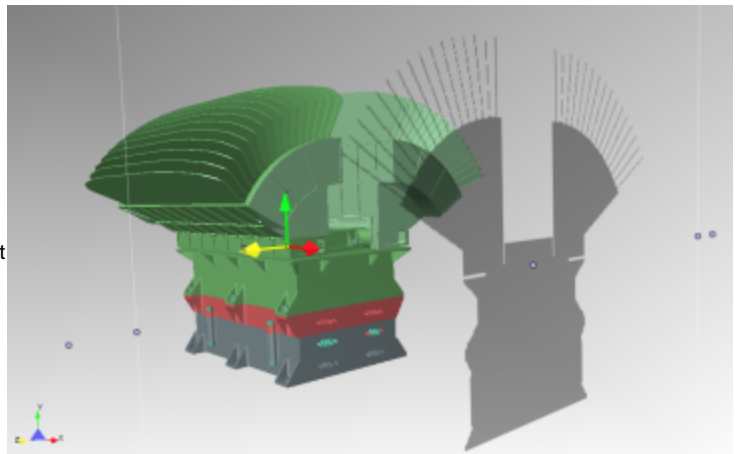
We improved the settings for the application as well. You can now control:

- The frequency for updates check over the Internet
- Enable/Disable the auto-deploy feature
- Change the number of items shown in the last open document list.
- Enable/Disable update notifications in the home page
All settings can be saved to a XML file and re-imported later or on other stations running SpinFire.

New/Improved CAD formats support

- **I-Deas**
SpinFire 10.0 now handles I-Deas files with the extensions MF1, ARC, UNV, and PKG. The version of I-Deas supported are:
 - Up to 13.x (NX 5)
 - NX I-deas 6
- **SolidWorks**
SpinFire 9.0 handled only the display data of SolidWorks 3D models. SpinFire 10.0 has improved on this utilizing the additional data in the SolidWorks files however if this cannot be processed we fall back to the display data method. You can force using the old method by enabling the importer options setting, **Import Only Display Data** for the SolidWorks importer.

SolidWorks versions support are up to 2011.



- In addition we incorporated bug fixes and additional improvements to the following importers since SpinFire 9.0:
 - **Catia v4** - now supports versions up to 4.2.5
 - **Catia v5** - now supports versions up to R20
 - **Inventor** - now supports versions up to 2012
 - **JT** - now supports versions up to 9.5
 - **NX** - now supports versions up to NX7.5
 - **ParaSolid** - now supports versions up to 23
 - **PRC** - supports all Versions
 - **Pro/ENGINEER** - now supports versions up to Wildfire 5
 - **STEP** - now supports versions AP 203 E1/E2, AP 214

Most important bug fixes

In SpinFire 10 we fixed a large amount of issues from previous versions. The following are some of the most important:

- The order of the recent open document was not changing when an existing document was reopened.
- The file association of CAD files was broken in SpinFire 9
- Image preview of .3D files in Windows Explorer was broken in SpinFire 9. It has been fixed and improved to take advantage of Windows 7 improved capabilities.
- SpinFire 9 required "Compatibility Mode" in Windows Vista and Windows 7. SpinFire 10 is fully compatible with Windows 7.
- Picking and measuring along a cross-section has been fixed.
- Printing in pure Black and White was not working properly. SpinFire 10 fixes the problem and allow to import 2D in pure black and white for most of 2D file formats.
- Multiple problems with picking points, circles and edges have been fixed when working in multiple viewport modes.
- Auto-installation of importers has been re-introduced.
- Pointsets entities are now more visible and easy to pick and measure.